



**DR. DWIGHT H. PATE**  
D.M.D., P.A.  
*General Dentistry*



**Location:**

Dwight H. Pate, DMD, PA  
306 Pilaklakaha Avenue, Suite A  
Auburndale, FL 33823

**Date:**

October 21, 2017  
Optional 2nd day: October 22, 2017

Learn how to make  
Implant Surgical Guides for as little as \$20  
with Free Software  
Relax with speed, accuracy and predictability!

**Call 863-967-1233 to Register**

Monday — Thursday 7 AM to 5 PM  
Friday 8 AM to Noon

Tuition  
Day 1: \$850  
Both Days \$1,450  
Course limited to 9 participants

**Day 1: Software training and start printing guides for day 2.**

- All the basic skills you need to plan and print a surgical guide

**Day 2: Post processing and curing of the printed surgical guides.**

- Bring a case (DICOMs and STL) and we will plan your case together. Take home a guide for this case to do your office
- Refining and improving basic skills by doing more cases
- You will leave at the next level and be more comfortable with the design and print functions.
- I will work with each participant independently with your specific needs to take you to the next level
- We will finish Day 2 around noon but I will stay later (until 4pm) and work with you longer if you need extra practice. We will work at your pace.

**You will learn:**

- Where to get free software and how to design and print surgical guides
- The science and rationale of surgical guide fabrication
- Data types needed and how to use them to create surgical guides
- Multiple strategies for merging the data files and how to know when they are accurate
- CBCT scan protocols and how to decide which one to use
- What is a fiducial scan appliance and what is it used for
- How to limit and work around scatter from metal produced during CBCT scanning
- What is a dual scan registration for edentulous or complex cases
- Strategies to help you in treatment planning and guide design
- How to accurately plan the implant location for various scenarios
- How to generate and export the surgical guide to a printer or a printing lab
- How to work with scan and print lab to produce a guide if you do not have a scanner or a printer
- How to use scanners and printers if you choose to have these in your office

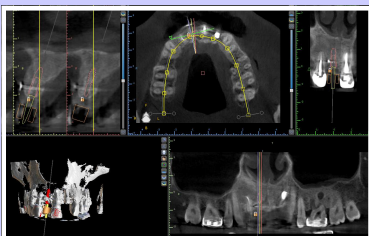


**Dr. Dwight Pate**

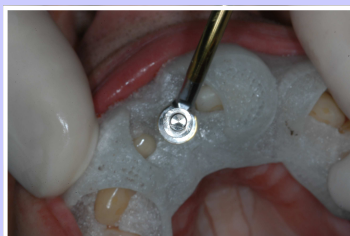
is Clinical Director with Implant Educators, Core Faculty at The University of Florida Advance Education in General Dentistry Residency Program and has 28 years experience in implant dentistry and 3D treatment planning. He has a unique teaching approach and exceptional ability to get students to understand the concepts necessary to become comfortable in the 3D environment necessary to use the digital workflows in dentistry today. He is passionately committed to helping you become more proficient in planning and placing dental implants.

**Get more confidence with speed, accuracy and predictability!**

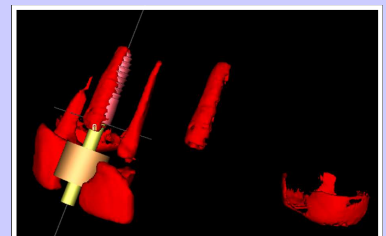
Relax with speed, accuracy and predictability!



**The Plan:** Software Training



**The Execution:** 3D printed guide based on the plan



**The Results:** overlay of pre-op and post-op CBCT scans